

# TRANSFORMING OBSTACLES INTO OPPORTUNITY.

## GET MORE OUT OF MOBILITY.

### The benefits of a forward-thinking strategy.

Mobility has brought massive changes to the way we work, and to avoid lagging behind, you need to be able to respond to these changes. But to truly move your organization forward, it takes a proactive approach. We can help you build and implement a mobility strategy that lets you do more than just contain complexities in order to position your organization for future success.

## STREAMLINE AND SIMPLIFY.

### Making mobility more manageable.

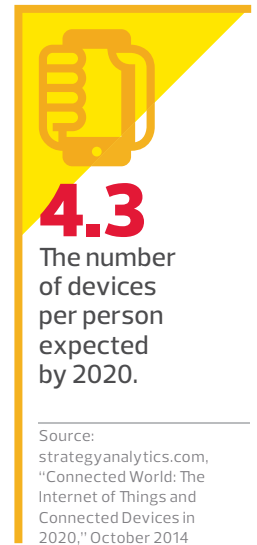
Our Total Mobility Management approach is designed to support your mobility goals while easing the burden on your staff. Its three pillars – devices, management and security, and applications – are designed to support your comprehensive and customizable mobility solution. We'll work with you to create an individualized strategy with a process that includes:

- + Solution assessments
- + Risk mitigation
- + Planning, design and implementation
- + Best-practice checklists and templates
- + Ongoing service and support
- + Networking expertise
- + Policy definition
- + Security team expertise

### Assessing appropriate applications.

More and more, mobile workers are utilizing more apps than ever to help get the job done. But many organizations struggle to properly deploy and secure them. At CDW, we can help you develop a comprehensive app strategy that supports your mobile workforce and your organization's objectives.

We can help you choose from an impressive selection of off-the-shelf offerings with proven success. Or, if you need a more customized approach, we'll connect you with our trusted partners to design and build applications to meet your specific needs.





## CASE STUDY: THE CHARMER SUNBELT GROUP MOBILIZES SALES

See how we helped one company arm its sales force with iPads and deliver marketing materials and real-time inventory information to their fingertips. Read the case study at [CDW.com/charmersonbelt](http://CDW.com/charmersonbelt)

## YOU and CDW

### Strategic support to maximize mobility.

When you work with us, you get an entire team of experts, including a dedicated account manager, knowledgeable solution architects, engineers, optimization specialists, help desk specialists and enterprise mobility management (EMM) admin support. And our expertise extends beyond mobility to help ensure your solution is properly integrated with all of your other solutions, including security, networking, data center and cloud.

We'll help you determine the right strategy and utilize our partnerships with leading vendors to bring you the tools you need to achieve your goals. We can help you design and implement your solution, but our comprehensive approach doesn't stop there. We're here to help you maintain it and continue to innovate so you get the most out of your mobility solution.

## MOBILITY SOLUTIONS FROM PARTNERS WHO GET IT



HP offers a budget-friendly portfolio of notebooks, tablets and PCs designed to meet your needs. Stay connected anywhere with HP's extensive wireless connectivity options and keep data secure using HP ProtectTools™ security software.



MobileIron® provides an EMM solution that meets both user demands and IT needs. This platform allows IT to secure and manage devices, apps and content, providing end users with instant access to data.



IBM MobileFirst™ Protect, formerly MaaS360, allows you to quickly and easily deploy devices; deliver email, documents and apps; and enable secure content collaboration on personal or organization-owned mobile devices.



Toshiba offers a lineup of mobile products to empower your workforce wherever opportunity takes them. Count on Toshiba for the business-savvy features needed plus sophisticated designs to move fast and make a lasting impression.



### CERTIFIED EXPERTISE

We're backed by industry certifications from:

- CITRIX
- MOBILEIRON
- AIRWATCH
- APPLE
- CISCO/MERAKI
- VMWARE
- IBM
- KONY



Let us help you embrace a smarter approach to mobility.

**CALL YOUR ACCOUNT MANAGER AT 800.800.4239 OR VISIT [CDW.COM/MOBILITY](http://CDW.COM/MOBILITY)**



[CDW.com/mobility](http://CDW.com/mobility) | 800.800.4239

MKT3749

The terms and conditions of product sales are limited to those contained on CDW's website at [CDW.com](http://CDW.com); notice of objection to and rejection of any additional or different terms in any form delivered by customer is hereby given; CDW®, CDW-G® and PEOPLE WHO GET IT™ are trademarks of CDW LLC; all other trademarks and registered trademarks are the sole property of their respective owners